

Ida Lewis Yacht Club
Organizing Authority

12M Americas Fleet, Inc.
Host



2019
Newport Trophy Regatta
Newport, Rhode Island, USA.
June 29-30, 2019

Sailing Instructions

1.0 RULES.

- 1.1 The Regatta will be governed by the rules as defined in the Racing Rules of Sailing (RRS).
- 1.2 ITMA/12 Metre Class By-Laws & Regulations as of July 2, 2008, updated November 1, 2011 and the ITMA/12 Metre Class Rules as of November 1, 2018, and any subsequent amendments.
- 1.3 The Equipment Rules of Sailing ("ERS") shall apply.
- 1.4 If there is a conflict between languages, the English text shall take precedence.

2. NOTICE TO COMPETITORS - Notices to competitors will be posted on the official notice board located on the deck to the west of the the Ida Lewis YC main building. Notices to competitors on the official notice board constitute notice as required by rules 63.2, the US Prescription to rule 63.2 and rule 65.1.

3. CHANGES TO SAILING INSTRUCTIONS - Any change to the Sailing Instruction will be posted before 0830 on the day it will take effect; except any change to the schedule of races will be posted by 2000 on the day before it will take effect.

4. Signals Made Ashore

- 4.1 Signals made ashore will be displayed from the flagpole at Ida Lewis Yacht Club.
- 4.2 When flag "AP" is displayed ashore, "1 minute" is replaced with "not less than 60 minutes" in race signal "AP".
- 4.3 When flag "Y" is displayed ashore, Rule 40 applies at all times while afloat. This changes the part 4 Preamble

5. SCHEDULE OF RACES

- 5.1 A maximum of FOUR (4) races are scheduled.
 - 5.1.1 On Saturday, June 29 no more than three (3) races will be sailed.
 - 5.1.2 On Sunday, June 30 there will be one race – The IYAC Newport Cup Around the Island Race.
- 5.2 The first warning signal is scheduled for 1100 each day.
- 5.3 On Sunday, June 30th, no warning signal will be made after 1500 hrs.

6. CLASS FLAGS – Class flags

- 6.1 **Saturday, June 29**

Class 1 - Grand Prix	Numeral Pennant 1
Class 2 - Traditional	Numeral Pennant 1
Class 3 - Modern	Numeral Pennant 2
- 6.2 Sunday, June 30

Class 2 – All 12 Metres	Numeral Pennant 2
-------------------------	-------------------

7. RACING AREA

- 7.1 Races will be held on the waters of Narragansett Bay or Rhode Island Sound.
- 7.2 The Rendezvous area on Saturday, June 29 will be signaled at 0900 from the flagpole at Ida Lewis Yacht Club and announced on VHF Channel 72.
- 7.3 Rendezvous Areas for Saturday, June 29 are as follows (See Appendix A):
 - Area A – southwest of R"2", Brenton Point
 - Area R – south of Halfway Rock, East Passage, Narragansett Bay.
- 7.4 The Rendezvous Area on Sunday, June 30 will be South of the Pell Bridge.

8. THE COURSES

- 8.1 The courses on Saturday, June 29 will be windward-leeward courses (Courses "W") See Appendix B - Course Diagrams.
 - 8.1.1 The number of legs, and the approximate heading of and distance to the first mark will be displayed on a white board on the Race Committee Signal Boat no later than the warning signal.
 - 8.1.2 All Rounding marks shall be left to port.
 - 8.1.3 For all courses there will be an offset mark after the original windward mark. No offset mark will be set after a changed windward mark is set. The distance between the weather mark and the offset shall not be counted as a leg.
 - 8.1.4 The leeward mark for:
 - 8.1.5 W Course will be approximately 0.1 NM to windward of the starting line;
- 8.2 The course on Sunday the 12 Metre Fleet will sail an around the island race as participants in the IYAC Newport Cup.
 - 8.2.1 The IYAC Newport Cup NORs and Sis, including course descriptions are attached as Appendix C.
 - 8.2.2 By entering the Newport Trophy Regatta, a boat will be automatically entered in the Newport Cup, with no additional entry fee.

9. MARKS

- 9.1 Rounding marks will be orange tetrahedrons. The offset mark shall be an orange sphere.
- 9.2 A new mark, as provided for in SI 11.1 will be a yellow tetrahedron.
- 9.3 The starting mark will be a yellow mark.
- 9.4 The finish mark will be an orange sphere.

10. THE START

- 10.1 Races will be started in accordance with rule 26.
- 10.2 The starting line will be between a staff displaying an orange flag on the Race Committee Signal Boat at the starboard end and course side of the port-end starting mark or a staff displaying an orange flag on an anchored Race Committee pin boat at the port end of the line.
- 10.3 A boat starting later than 5 minutes after her starting signal will be scored Did Not Start without a hearing. This changes rules A4 and A5.
- 10.4 Boats whose warning signal has not been made shall keep clear of the starting area.
- 10.5 The Race Committee will endeavor to hail each premature starter over channel 72. Failure to make such an announcement, the number of times an announcement is made, or the order in which a particular boat is hailed shall not be grounds for redress. This changes rule 62.1 (a).
- 10.6 On Saturday, June 29th, the Traditional Division and the Grand Prix Division will start first and together. The Modern Division will start second.
- 10.7 On Sunday, June 30th, all 12 Metre entries will start together as Class 2.

11. CHANGE OF THE NEXT LEG OF THE COURSE

- 11.1 In addition to the requirements of rule 33, to change the next leg of the course, the race committee will lay a new mark (or move the finishing line) and remove the original mark as soon as practicable. When, in a subsequent change a new mark is replaced, it will be replaced with an original mark.
- 11.2 If the weather mark is moved after the first leg of a race, then there will not be an offset set for that or any subsequent leg of the race.

12. THE FINISH

- 12.1 The finish line will be between a staff displaying a blue flag on the Race Committee Boat and the course side of the finishing mark.
- 12.2 The finish line Race Committee Boat will notify each class after they finish if there will be no more racing that day.

13. PENALTY SYSTEM

- 13.1 The Scoring Penalty, RRS 44.3 will apply. The penalty will be two (2) places. However, when a yacht may have broken RRS 31 but not a Rule of Part 2 in the same incident, the penalty will be one (1) place.

14. TIME LIMITS – Saturday, June 29th

- 14.1 The time limit for the first boat in a class to complete the course in a race is 3 hours.
- 14.2 Any boats failing to finish within 30 minutes of the first boat in her class to sail the course and finish will be scored TLE without a hearing. A boat scored TLE shall receive points equal to the number of boats that finished within the 30 minute window for that race plus one. This changes Rules 35.1, A4.1 and A5.

15. PROTESTS AND REQUESTS FOR REDRESS

- 15.1 The 12 Metre Class shall file any and all protests for all races (Saturday and Sunday) between and among 12 Metre boats and between 12 Metre and non 12 Metre boats with the Ida Lewis Protest Committee in accordance the requirements presented below.
- 15.2 Protest forms will be available from the Protest Committee Desk at the Ida Lewis Yacht Club. Protests and requests for redress shall be delivered to the Protest Committee Desk within the appropriate time limit.
- 15.3 The protest time limit is one (1) hour after the Race Committee Signal Boat docks after the last race of the day on Saturday, June 29; and one and half (1 ½) hours after the last 12 Metre finishes on Sunday. The protest time limit will be posted on the official notice board.
- 15.4 Notices will be posted no later than 10 minutes after the protest time limit to inform competitors of hearing in which they are parties or named as witnesses. Hearings will be held in the regatta protest room at Ida Lewis Yacht Club. Representatives of boats who are parties to a hearing shall remain on call in the vicinity of the protest room. Failure of a boat to appear when called for a hearing will be considered by the Protest Committee as grounds for proceeding under rule 63.3(b).
- 15.5 A boat shall report and receive acknowledgement of its intention to protest and the yacht being protested immediately after the finish of the race to the Race Committee by radio on VHF 72.
- 15.6 A list of boats that accepted a scoring penalty will be posted on the Official Notice Board.
- 15.7 Rule 63.5 is changed by adding — "A protest involving contact may be heard by the Protest Committee even though the requirements of rule 61.1(a) and 61.3 have not been fulfilled."
- 15.8 Penalties, if any, for breaches of rules other than rules of Part 2 may be less than disqualification if the Protest Committee so decides. This changes rule 64.1(a).
- 15.9 Breaches of SIs 17 and 19 will not be grounds for a protest by a yacht. This changes rule 60.1(a).

16. SCORING

- 16.1 For the Newport Trophy Regatta
 - 16.1.1 Boats will be scored by Division, including the Around the Island race on Sunday.
 - 16.1.2 The Low Point scoring system of Appendix A will apply.
 - 16.1.3 A boat's series score shall be the total of all her race scores. This changes rule A2.
 - 16.1.4 One completed race will constitute a regatta.
- 16.2 For the Newport Cup Regatta (Sunday race only) the 12 Metre fleet will be scored using the OA assigned PHRF time correction factors. Those factors are:
 - Grand Prix Division: -35 secs/mile
 - Modern Division: -30 secs/mile
 - Traditional Division: +40 secs/mile

17. SAFETY REGULATIONS

- 17.1 Check In – prior to the first warning of each day all yachts shall check in the Race Committee by hailing them on VHF 79A and reporting their number and name until acknowledged.
- 17.2 A yacht that retires shall notify the Race Committee as soon as possible.
- 17.3 In the event that life saving equipment is lost overboard, it should be retrieved. If recovery is impossible, loss of any equipment that floats shall be reported immediately to the Race Committee and to the nearest U.S. Coast Guard station on VHF Channel 16.
- 17.4 In the event that a crew member falls overboard and is no longer connected to the yacht, she shall:
 - a) retire from the race
 - b) notify the Race Committee on VHF channel 72 that she has a man overboard
 - c) her score in this case shall be equal to the number of starters for

that race without a hearing. The scoring abbreviation will be MOB
This changes RRS 63.1, A4, A5 and A11. However, her obligations as per RRS 1.1 are not changed.

18. SUPPORT BOATS - Support boats shall stay outside of a 100 yard radius of any boat that is racing.

19. RADIO COMMUNICATIONS

- 19.1 Except in an emergency, a boat shall neither make radio transmissions while racing nor receive radio communications not available to all boats. This restriction also applies to mobile telephones and any other wireless device.
- 19.2 During the race, contestants may not receive weather, current, or navigational information except from a publicized source available at no cost to all competitors. Subscription, password protected or restricted access web pages are considered private information and may not be used for the transmission or reception of specialized weather information.
- 19.3 General use of the Internet and publicly available web sites to obtain weather including all National Weather Service data is authorized. Weather data developed specifically for the Race may not be received while racing.
- 19.4 The race committee will utilize VHF Channel 72 for communications with competing boats for race information, recalls, change of course, etc. Failure to do so shall not be grounds for seeking redress.

20. PRIZES - As per the Notice of Race

21. NOTES

- 21.1 Competitors are reminded that Narragansett Bay is a restricted channel and sailing vessels do not have right of way over a vessel under power which may be restricted in her ability to maneuver.
- 21.2 In the event there is racing in Narragansett Bay, competitors should be aware of heightened security around the Navy base in Newport just to the north of the Newport Jamestown Bridge. The area to the along the coast of the Naval Facilities from Coasters Harbor to the breakwater at the north end of Coddington Cove marked by a series of white buoys shall rank as an obstruction. Yachts shall not enter this area.

22. DISCLAIMER OF LIABILITY - Competitors participate in the regatta entirely at their own risk. See RRS 4, Decision to Race. The Organizing Authority, the 12 Metre Class and any sponsors will not accept any liability for material damage or personal injury or death sustained in conjunction with or prior to, during, or after the regatta. Attention is also drawn to ISAF Offshore Special Regulation 1.02, Responsibility of the Person in Charge, as well as the "Waiver and Release of Liability".

23. MEDIA RELEASE: Competitors and crew members on the competing yachts grant, at no cost, to ITMA, the 12M Americas Fleet, Inc., Ida Lewis Yacht Club, sponsors and affiliated companies the absolute right and permission to use their name, voice, image, likeness, biographical material and representations of the boats in any media World-wide (including but not limited to television, video, print and electronic media), for the purposes of advertising, promoting, reporting and disseminating information.

24. OTHER INFORMATION

IDA LEWIS YACHT CLUB

Commodore

Dan Faria

Race Committee Chair
PRO
Web Site

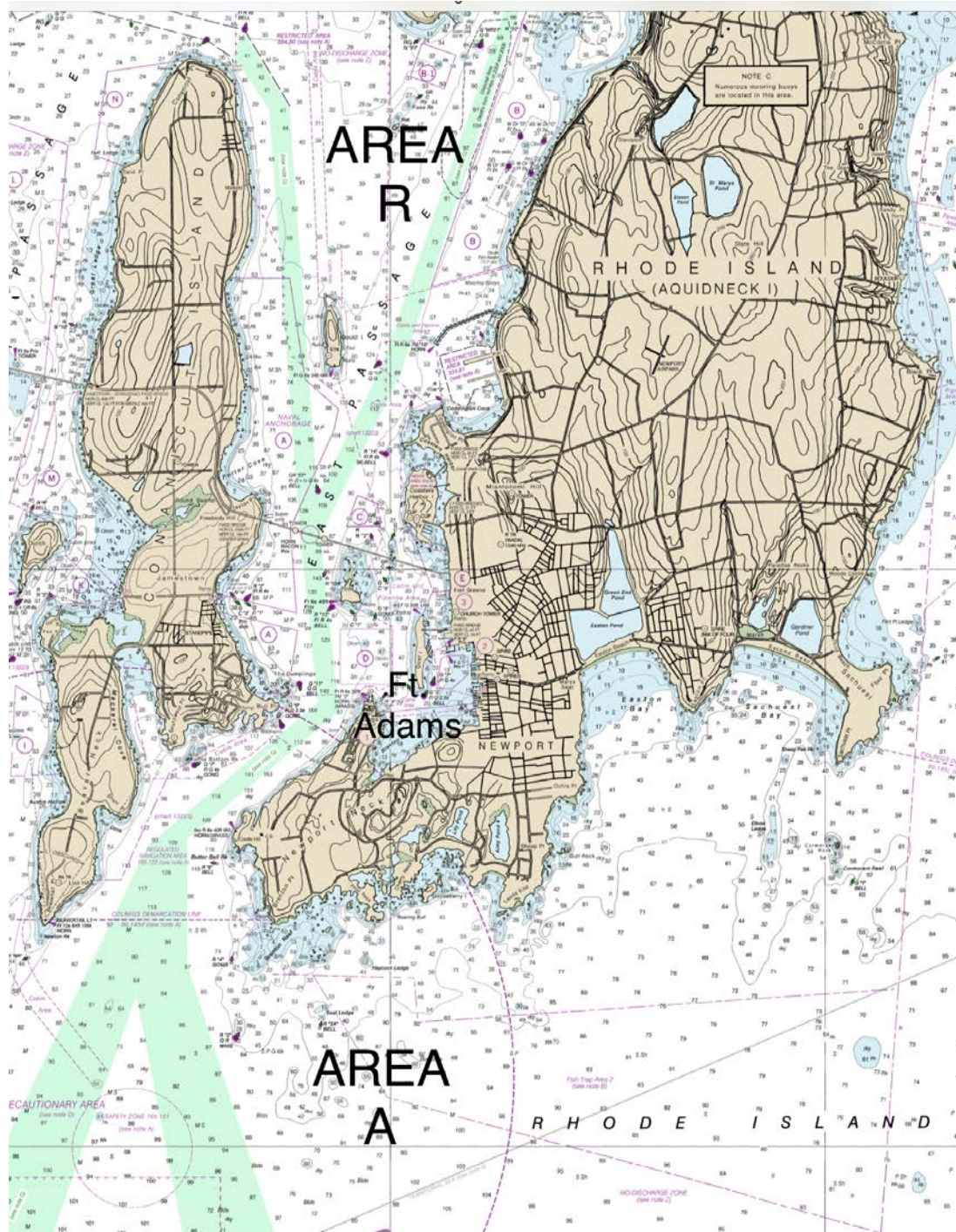
Bill O'Hanley
Ron Hopkins
ILYC.ORG

Yacht Scoring

<https://yachtscoring.com/emenu.cfm?eID=6141>

APPENDIX A

RENDEZVOUS AREAS



Appendix B

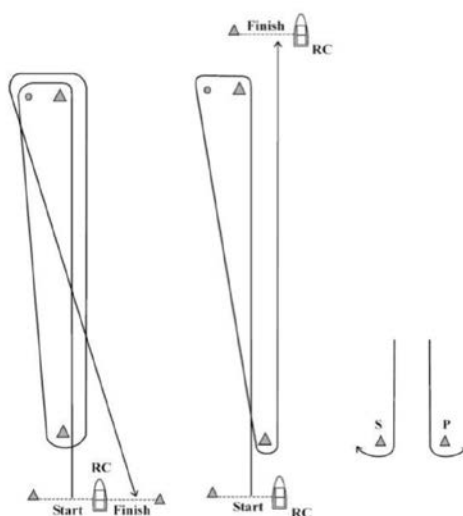
Course Diagrams

Course “W”

Course “W”

EVEN # of Legs

ODD # of Legs



COURSE NOTES

1. No later than the warning signal, the Race Committee will signal the course designation, and distance and bearing to the windward mark on a white board on the starboard side of the Race Committee Signal Boat.
2. Course “W” is a Windward/Leeward course with a windward offset mark and the initial leeward mark located approximately 0.10 NM to weather of the starting line.
3. A gate mark may be used as the leeward mark for courses “W”.
4. Marks, including the windward offset mark, shall be rounded in order and always left to port, except that a gate, when used, shall be rounded as described in rule 28.1(c)

Appendix C



NEWPORT CUP

THE AROUND THE ISLAND RACE

Sunday, June 30, 2019



Notice of Race, Sailing Instructions and Application w/Waiver

1. **MANAGEMENT:** The Around the Island Race will be conducted by the International Yacht and Athletic Club, (IYAC), which will have the authority to reject an entry before the race starts, interpret the rules and conditions of the race and decide to protest. The Fleet shall be divided into handicap and one design classes according to rating and other factors at the discretion of the Management. The Race is open to:
2. **ELIGIBILITY:**
 - a. Cruising/Racing Yachts with a 2019 PHRF of Narragansett Bay Handicap. Yachts without a 2019 PHRF of Narragansett Bay Handicap will be reviewed by the Management and assigned either their regional PHRF Handicap or will receive a rating based on comparative Narragansett Bay Handicaps. A copy of certification must be submitted with entry form.
 - b. One design classes.

3. RULES:

- a. The Rules governing the race will be the 2017-2020 Racing Rules of Sailing as administered by the US Sailing Association and individual Class Rules shall apply.
- b. World Sailing, Regulation 20 – Advertising code shall be at the discretion of and approved by the Management.
- c. The Sailing Instructions, including Amendments, take precedence in case of conflict.

4. CLASSES

- a. PHRF Class designation will be posted based on the number of entries at the Skippers' Meeting.
- b. One Design Classes – There must be at least 4 yachts entered in One Design classes to qualify for a separate start. If there are less than 4 entered, the Yacht will be racing in Class 1 PHRF. All yachts must fly the appropriate code flag for their class from their backstay. Code flags designating the classes are:

Class 1	Numeral Pennant 1
Class 2	Numeral Pennant 2
Class 3	Numeral Pennant 3
Class 4	Numeral Pennant 4

- 5. AWARDS: Awards will be presented at the Post Race Party at the IYAC, on Sunday, June 30, 2019 at 6:00 pm
- 6. ASSUMPTION OF RISKS: It shall be the sole responsibility of each Yacht to decide whether or not to start or continue the race and to comply with minimum USCG safety regulations for their Class. Each competitor, by participation, agrees that neither the IYAC nor the persons assisting the race shall be responsible for damage or injury suffered during the race.
- 7. ENTRY PROCEDURE: Each entrant must submit a copy of the Yacht's 2019 PHRF/NB rating form, the completed IYAC Entry and Liability Waiver and entry fee of \$1.00 per foot of length by Saturday, June 29, 2019. To be delivered or mailed to: IYAC, 536 Thames Street, Newport, RI 02840. Any questions, call Mick Harvey at (401) 935-8097.
- 8. SKIPPER'S MEETING: To be held Sunday, June 30, 2019, 0830 hours at the IYAC located at 536 Thames Street, Newport, RI. All yachts are advised to be represented at this meeting. Final Racing Instructions, Class Designations and sponsor gear will be distributed at this meeting.
- 9. PRIZES: Prizes will be awarded for each Class. The Newport Cup will be awarded to the Yacht with the best PHRF corrected time. (Including One Design Class Yachts which will be given a class PHRF rating for this trophy.)

SAILING INSTRUCTIONS

1. STARTING AND FINISHING LINE: Will be between a staff flying an orange flag on the committee boat, anchored West of Goat Island and East of the shipping channel, and an orange buoy.
2. CHECK IN: All Yachts shall check in with the Race Committee Boat prior to the warning signal.
3. COMMUNICATIONS: The Race Committee Boat will be monitoring VHF Channel 72 and will notify competitors of all race announcements.
4. PFD RULE: If the Race Committee boat displays Code Flag "Y", Rule 40.1 is in effect. All competitors must wear an approved PFD.
5. COURSE SIGNALS: Course letters will be displayed under the individual class designators from the Race Committee Boat.
6. SPECIAL COURSE INSTRUCTIONS ALL CLASSES: The Newport to Jamestown Bridge shall be passed under the center span of the suspension section of the bridge. No Yacht shall sail between Rose Island and the Newport Bridge. The Jamestown to North Kingston Bridge shall be passed under the center span. The Race Committee may find it necessary to employ Code Flag "I" putting into effect the "Round the Ends" rule (RRS 30.1). When the Code Flag "I" has been displayed, and when any part of the Yacht's hull, crew, or equipment is on the course side of the starting line or its extensions during the minute before her starting signal, she shall return to the prestart side of the line across one of its extensions and start.
7. COURSES: The course will be displayed on the Race Committee Boat at the warning signal on the White Notice Board.
8. WINDWARD LEG: If the Race Committee Boat displays Code Flag W at the Warning Signal, there will be a short windward leg after the start for all the following courses. The windward mark will be an orange buoy and the rounding of this mark will be displayed on the Race Committee Boat by either a green flag (Starboard rounding), or a red flag (Port rounding) at the warning signal.
9. COURSE "O": Starting from North to South; from the Starting Line to FL G 2.5 Sec. Bell "11", The Dumplings, leave to Starboard; then to the RG Bell SW off Beavertail Point, leave to Starboard; then to Can "5", NW of Conanicut Point, leave to Starboard; then to R "2", NNE of Conanicut Point, leave to Starboard and then to Finish Line. Distance: 18.1 miles
10. COURSE "X": Starting from South to North; from the Starting Line to R "2", NNE of Conanicut Point, leave to Port; then to Can "5", NW of Conanicut Point, leave to Port; then to RG Bell, SW of Beavertail Point, leave to Port; then to FL G 2.5 Sec. Bell "11", The Dumplings, leave to Port and then to Finish Line. Distance 18.1 miles.

11. COURSE "Z": Starting from South to North; from the Starting Line to RG Nun South of Prudence Island, leave to Starboard, then to G "17", leave to Starboard, then to FL 2.5 Sec. Bell "11", The Dumplings, leave to Port and then to Finish Line. Distance 12.0 miles.
12. COURSE "P": Starting from North to South; from the Starting Line to FL G 2.5 Sec. Bell "11", The Dumplings, leave to Port, then to FL G 4 Sec. Bell "14", Bishop Rock, leave to Port; then to RG Nun South of Prudence Island, leave to Port and then to Finish Line. Distance 12.0 Miles.
13. COURSE "Y": Alternate Course to be displayed by Race Committee Boat on the White Notice Board prior to warning signal.
14. PROTEST: The flag used to signify a protest shall be Code Flag B. Protests shall be made in accordance with Rule #60 and must be delivered to the Ida Lewis Sunday, June 30 by 1750. Protests will be heard at the IYAC at the discretion of the Race Committee. Protest is discouraged, please do your turns.
15. POSTPONEMENT: AP, Answering Pennant and two sound signals. Race Committee will attempt to announce all signals on Channel 72.
16. ABANDONMENT: Code Flag N over Code Flag H and three sound signals.
17. INDIVIDUAL RECALL: Code Flag X and one sound signal. The Race Committee shall attempt to notify each Yacht recalled by hailing its Sail Number, but it is the responsibility of each Yacht to start correctly.
18. GENERAL RECALL: First Repeater and two sound signals. One minute after the First Repeater is lowered a new Warning Signal will resume the interrupted sequence of starting signals. The Class recalled will be the next to start.
19. TIME LIMIT: The time limit for this race is 1630 hours. One yacht of a class finishing within the time limit will constitute a race.
20. RETIREMENTS: Please notify the Race Committee
21. STARTING SIGNALS:

First Sequence

Class 1	Warning	Class Flag, one sound	1055 Hours
	Preparatory	Flag P (code flag I), one sound	1056
	1 Minute	Flag P removed, one long sound	1059
	Start	Class Flag removed, one sound	1100
Class 2	Warning	Class Flag, one sound	Approx 1 minute after